

## Polk County Schools Head Start 2021-2022 Annual Report

The Polk County Board of Education Head Start is a federally funded early childhood program that provides comprehensive services for families in Polk County, North Carolina. Head Start is one funding source for Polk County Board of Education to serve children ages 3-5 through a full school day, center-based program.

All teachers meet North Carolina Department of Public Instruction standards as a highly qualified licensed preschool teacher.

Children are served in classrooms at each of the four elementary schools and maintain a five-star license with the NC Division of Early Education and Child Development.

### Results of the Most Recent Review by the Office Head Start

The Administration of Children and Families (ACF) conducted a Focus Area One Monitoring Review in November, 2021. The program was found to be in compliance with all requirements applicable to the Head Start Performance Standards, laws, regulation, and policy requirements.

2021-2022 Preschool Funding Sources	
Head Start	\$738,592
NC PreK	\$479,906
Title I	\$105,667
Tuition/Local	\$172,880
State Developmental Day	\$ 22,543
State	\$ 39,047
Federal	\$ 53,530
<b>TOTAL</b>	<b>\$1.612.65</b>

2021-2022 Head Start Expenditures	
Salaries/Benefits	\$660,907
Operational Expenses	\$ 64,848
Training/Tech Assist	\$ 12,827
<b>TOTAL</b>	<b>\$738,582</b>

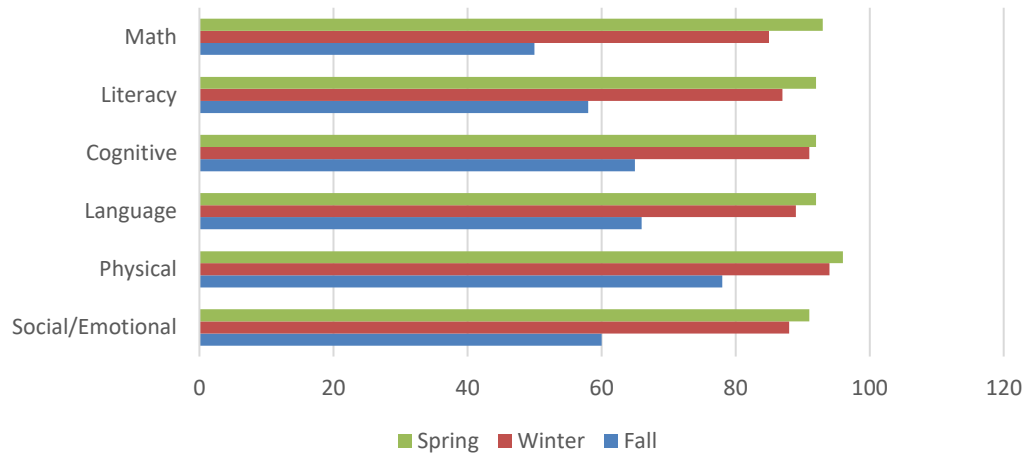
2022-2023 Head Start Budget	
Salaries/Benefits	\$721,340
Operational Expenses	\$ 66,608
Training/Tech Assist	\$ 12,827
<b>TOTAL</b>	<b>\$800,775</b>

**Audit:** An unqualified opinion was issued for 2021-2022 by Anderson, Smith, and Wike, PLLC, Certified Public Accountants. There were no federal findings or questioned costs.

Enrollment, Medical and Disabilities	
• Funded Enrollment	80
• Number of Children Served	86
• Average Monthly Enrollment	80
• Income Eligible	60
• Over Income Eligible	12
• Foster Children	3
• Homeless	2
• TANF/SSI	3
• Other Eligibility Criteria	6
• Children with Health Insurance	98%
• Up to Date on Preventive Care	92%
• Up to Date on Dental Care	94%
• Disabilities (Children with (IEP)	19%

Family Engagement/Parent Involvement	
• School Family Engagement activities	4x's a year along with daily interaction at the class level
• Family Math and Literacy Night	2x's a year
• Ready Rosie weekly playlist	
• Newsletters from teachers	
• Pertinent information about help for families through Child Plus and individual contacts	
• Communication through parent teacher conferences, emails, text messages, phone calls, notes to parents	

## 2021-2022 Child Assessment Data % of children Meeting/Exceeding Expectations



### School Readiness

- High Scope curriculum
- Teaching Strategies Gold assessment
- NC Foundations for Early Learning & Development
- All of the above aligned with HSELOF

### Transition

- *Into program*
  - Year-round application & enrollment process
  - Teachers plan an initial interaction with families before school or during the first week to start the relationship building process and share general information
  - Family visits to & observation of classrooms
- *Into Kindergarten*
  - Spring & end-of-year parent conferences
  - As a public school program, seamless transition from PreK to K, especially as regards paperwork/registration
  - Children visit K classrooms, cafeteria, gym, library, etc. at end of school year
  - Families given opportunity to visit K classroom prior to beginning of the year