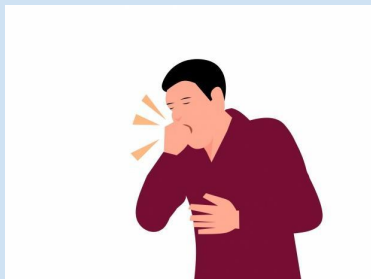




# Symptoms



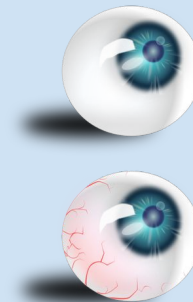
Fever



Cough



Runny Nose



Red, Watery Eyes

Rash approximately  
3-5 days after illness  
onset



# How is it spread?

Measles spreads from person to person when someone talks, coughs or sneezes near others.

Measles can live in the air and on surfaces for up to two hours after a person with the virus was in the area.



Measles can be transmitted four days prior to rash onset, through four days after rash onset.

## Exclusion per NCDHHS

- Any person student/staff who do not have proof of immunization or immunity that is identified as a close contact will be quarantined for 21 days. This includes religious and medical exemptions.
- If titer is drawn and immunity is proven, student/staff may return.
- If student/staff receives MMR vaccine within 72 hours of exposure they may return.
- School nurse and health department work together to identify close contacts and those that are not considered immune.

